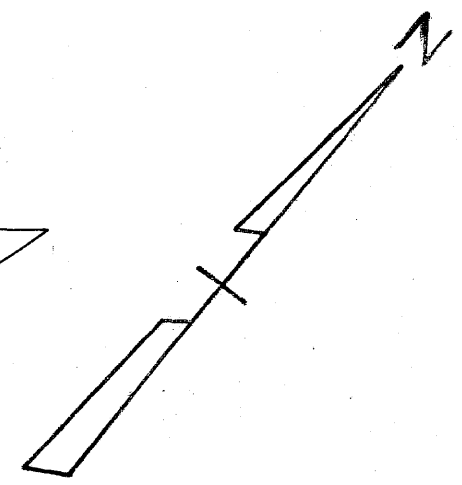
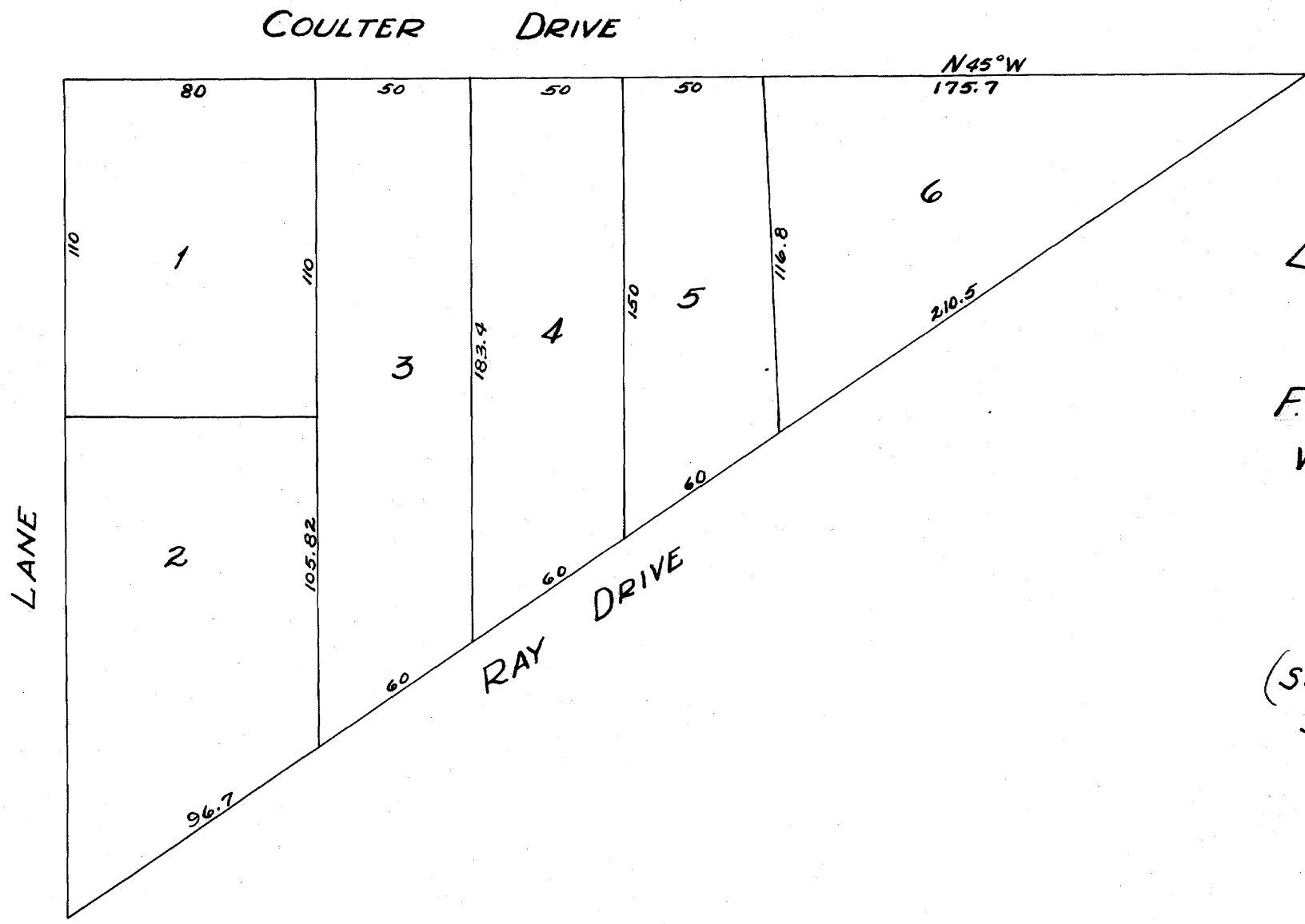


175.7
230
105.7

105.8
92.3
13.5



F.D. SMITH SUBDIVISION OF BLK. 10
WELCH ADD'N - BRYAN TEXAS
D.R. 101 PG. 517
Scale: 1" = 50'

(See Resubdivision)
Subsequent Sheet
D.R. 107, Pg. 154
Nov. 22, 1939

328

on base
and 815/08